

## About Precision Opportunities Fund Ltd

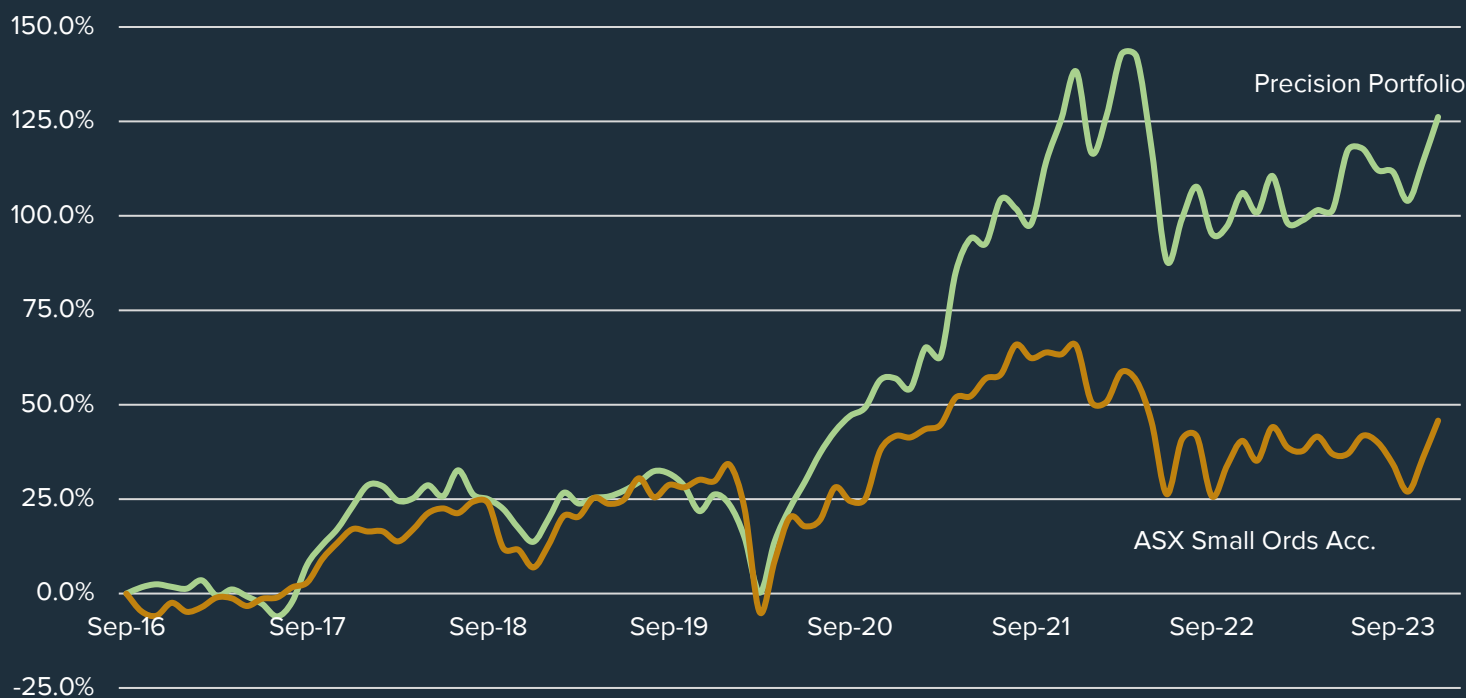
Precision Opportunities Fund Ltd ("POF") is an unlisted investment company that invests primarily in small to medium capitalisation companies. Most of these investments will have a connection to Western Australia.

The investment manager for POF is Precision Funds Management Pty Ltd ("PFM"). PFM is a specialist, independent investment manager. All PFM's principals have in excess of twenty years' experience in the small and mid-cap sectors of the ASX.

The PFM principals are all significant investors in the fund, contributing in excess of A\$9m between them, thereby aligning their interests with all shareholders of POF.

Inception Date	October 2016
Average portfolio return	12% per annum
Fund Size	\$87.6m
NTA Before Tax	39.9c per share
NTA After Tax	36.1c per share
Dividend per Share	1.25c fully franked
Gross dividend yield	4%

## Portfolio Performance (after fees and expenses)



## Management Team



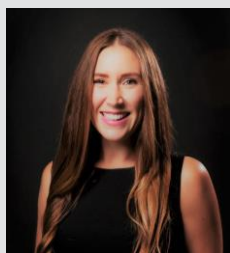
**Tony Kenny**

+ 61 407 192 758  
tkenny@precisionfm.com.au



**Tim Weir**

+ 61 407 089 773  
tweir@precisionfm.com.au



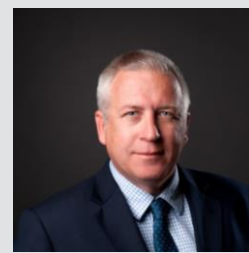
**Jess Ridley**

+ 61 401 457 205  
jridley@precisionfm.com.au



**Andy Clayton**

+ 61 438 953 832  
aclayton@precisionfm.com.au

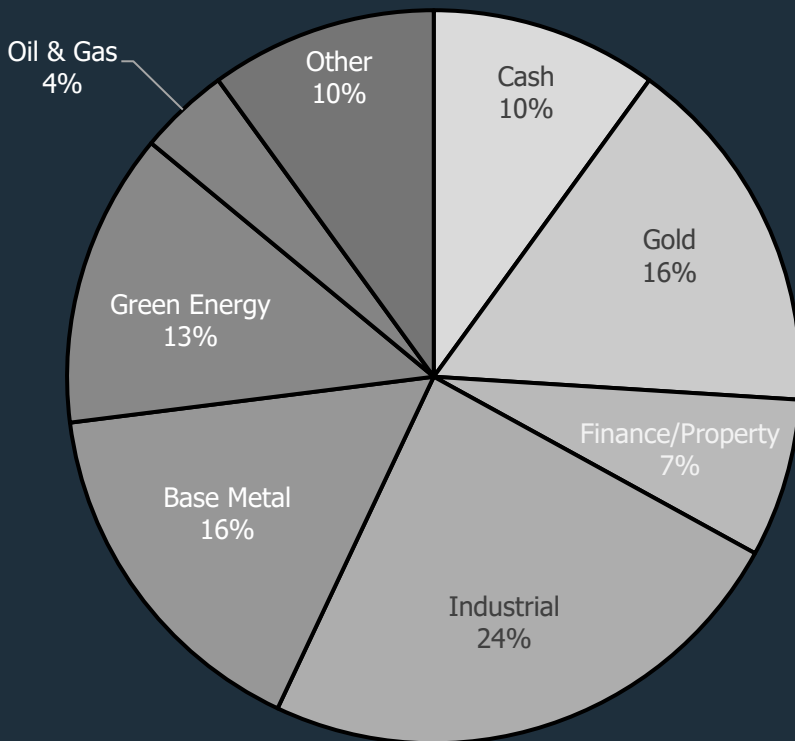


**Dermot Woods**

+ 61 407 786 273  
dwoods@precisionfm.com.au

## Portfolio Holdings

Company	Portfolio %
Spartan Resources	8%
Develop Global Ltd	6%
Macmahon Holdings Ltd	6%
SRG Global Ltd	5%
Centaurus Metals	4%
Strike Energy	4%
Encounter Resources	3%
Mount Gibson	3%
Cedar Woods Properties	3%
MLG Oz Ltd	3%
Other	44%
Cash	10%



## Independent Directors



**Michael Blakiston**  
Non-Executive Chairman

Michael is a highly experienced resources lawyer and company director who provides valuable legal and governance input to the POF board.



**Bill Beament**  
Non-Executive Director

Bill brings tremendous resource industry and company growth experience to POF. Bill grew Northern Star Ltd from a start up to an ASX100 company.



**Shane McLeay**  
Non-Executive Director

Shane is a mining engineer and founder of mining consultancy Entech. Shane has decades of mining project evaluation experience and is Non-Exec Director of Liontown Resources Ltd (LTR).

## Shareholder Communications

Register to receive our monthly updates via our website [www.precisionfm.com.au](http://www.precisionfm.com.au) or email Jess [jridley@precisionfm.com.au](mailto:jridley@precisionfm.com.au)

Follow us on LinkedIn



Website: [www.precisionfm.com.au](http://www.precisionfm.com.au)