

About Precision Opportunities Fund Ltd

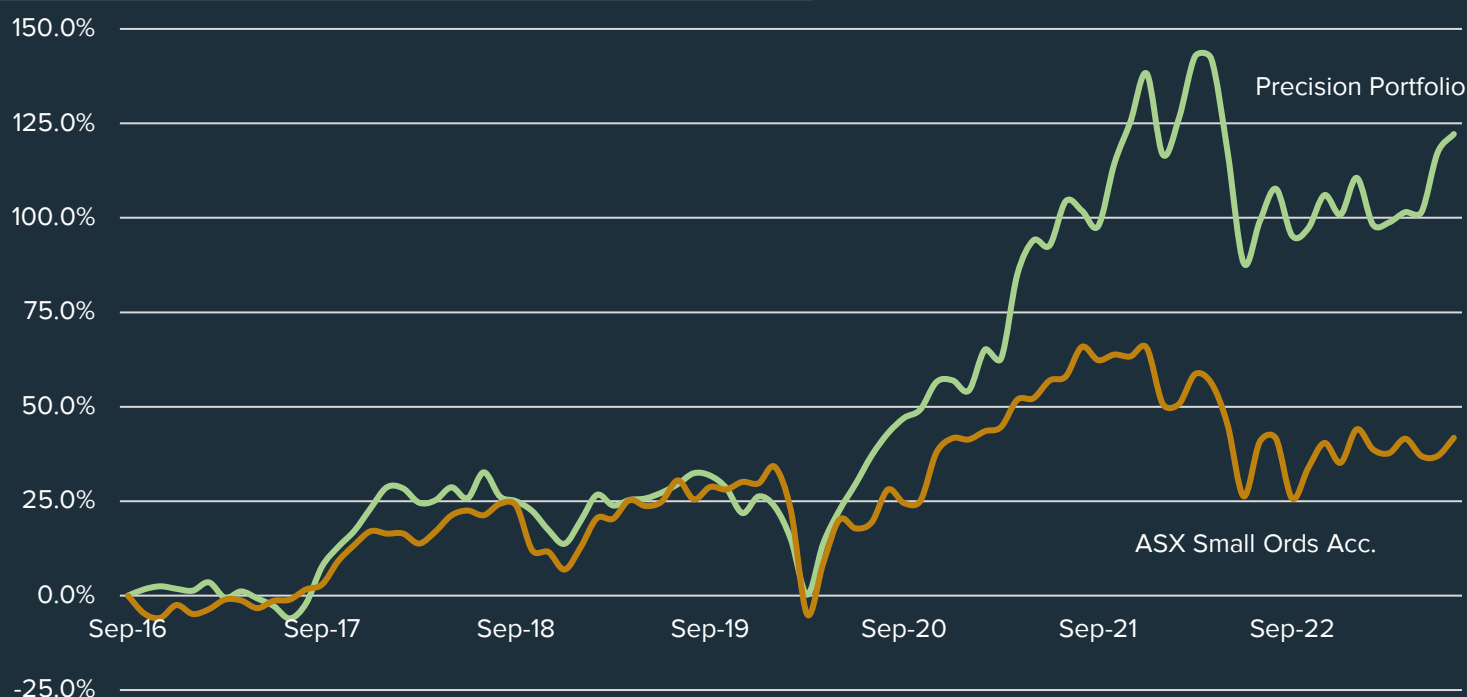
Precision Opportunities Fund Ltd ("POF") is an unlisted investment company that invests primarily in small to medium capitalisation companies. Most of these investments will have a connection to Western Australia.

The investment manager for POF is Precision Funds Management Pty Ltd ("PFM"). PFM is a specialist, independent investment manager. All PFM's principals have in excess of twenty years' experience in the small and mid-cap sectors of the ASX.

The PFM principals are all significant investors in the fund, contributing in excess of A\$9m between them, thereby aligning their interests with all shareholders of POF.

Inception Date	October 2016
Average portfolio return	12% per annum
Fund Size ¹	\$83.3m
NTA Before Tax	39.7c per share
NTA After Tax	36.3c per share
Dividend per Share	1c fully franked
Gross dividend yield	4%

Portfolio Performance (after fees and expenses)



Management Team



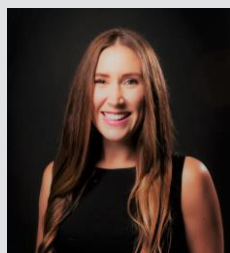
Tony Kenny

+ 61 407 192 758
tkenny@precisionfm.com.au



Tim Weir

+ 61 407 089 773
tweir@precisionfm.com.au



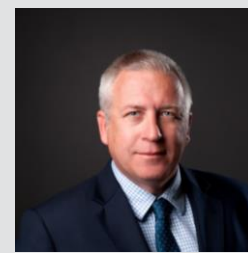
Jess Ridley

+ 61 401 457 205
jridley@precisionfm.com.au



Andy Clayton

+ 61 438 953 832
aclayton@precisionfm.com.au

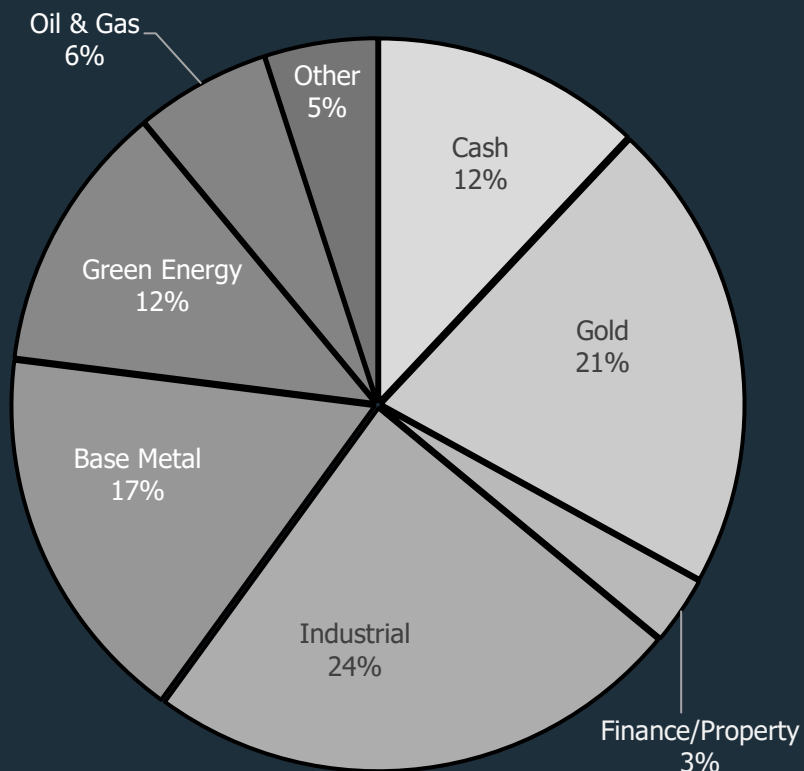


Dermot Woods

+ 61 407 786 273
dwoods@precisionfm.com.au

Portfolio Holdings

Company	Portfolio %
Develop Global Ltd	8%
SRG Global Ltd	6%
Encounter Resources	5%
Macmahon Holdings Ltd	5%
Genesis Minerals	4%
West African Resources	4%
Centaurus Metals	4%
Orecorp Ltd	4%
Australian Finance Group	3%
Talon Energy	3%
Other	42%
Cash	12%



Independent Directors



Michael Blakiston
Non-Executive Chairman

Michael is a highly experienced resources lawyer and company director who provides valuable legal and governance input to the POF board.



Bill Beament
Non-Executive Director

Bill brings tremendous resource industry and company growth experience to POF. Bill grew Northern Star Ltd from a start up to an ASX100 company.



Shane McLeay
Non-Executive Director

Shane is a mining engineer and founder of highly regarded mining consultancy Entech. Shane has decades of mining project evaluation experience.

Shareholder Communications

Register to receive our monthly updates via our website www.precisionfm.com.au or email Jess jridley@precisionfm.com.au

Follow us on LinkedIn



Website: www.precisionfm.com.au